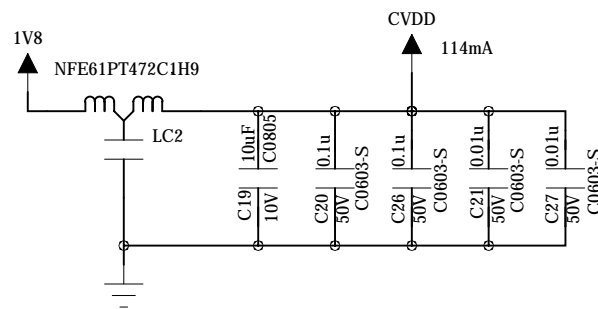
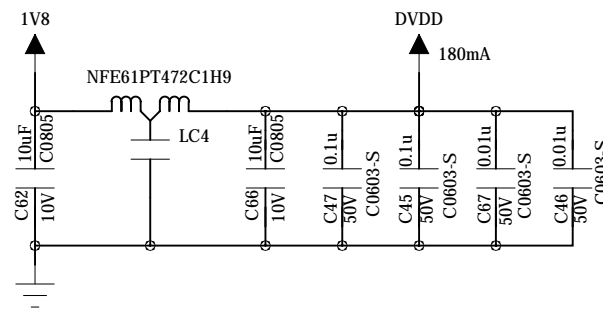
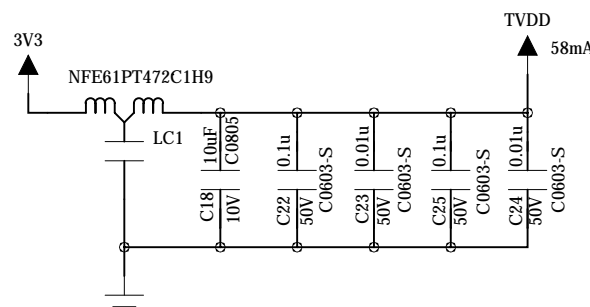
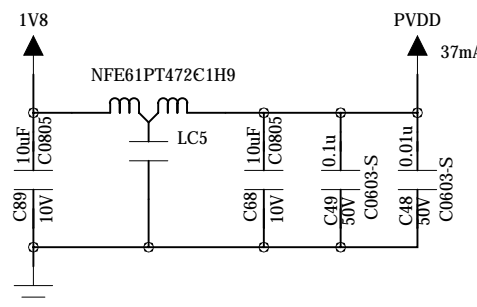
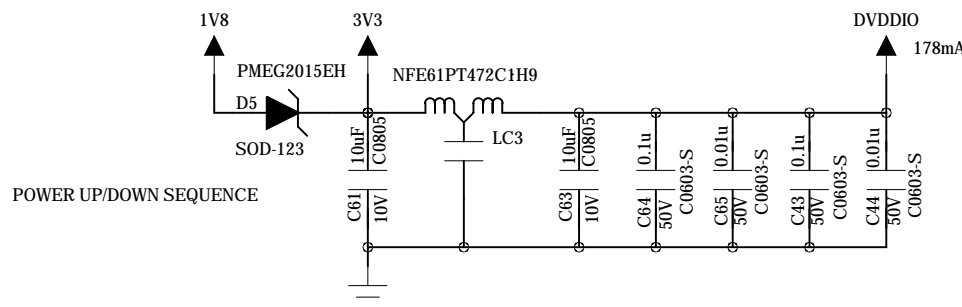
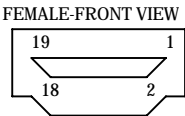


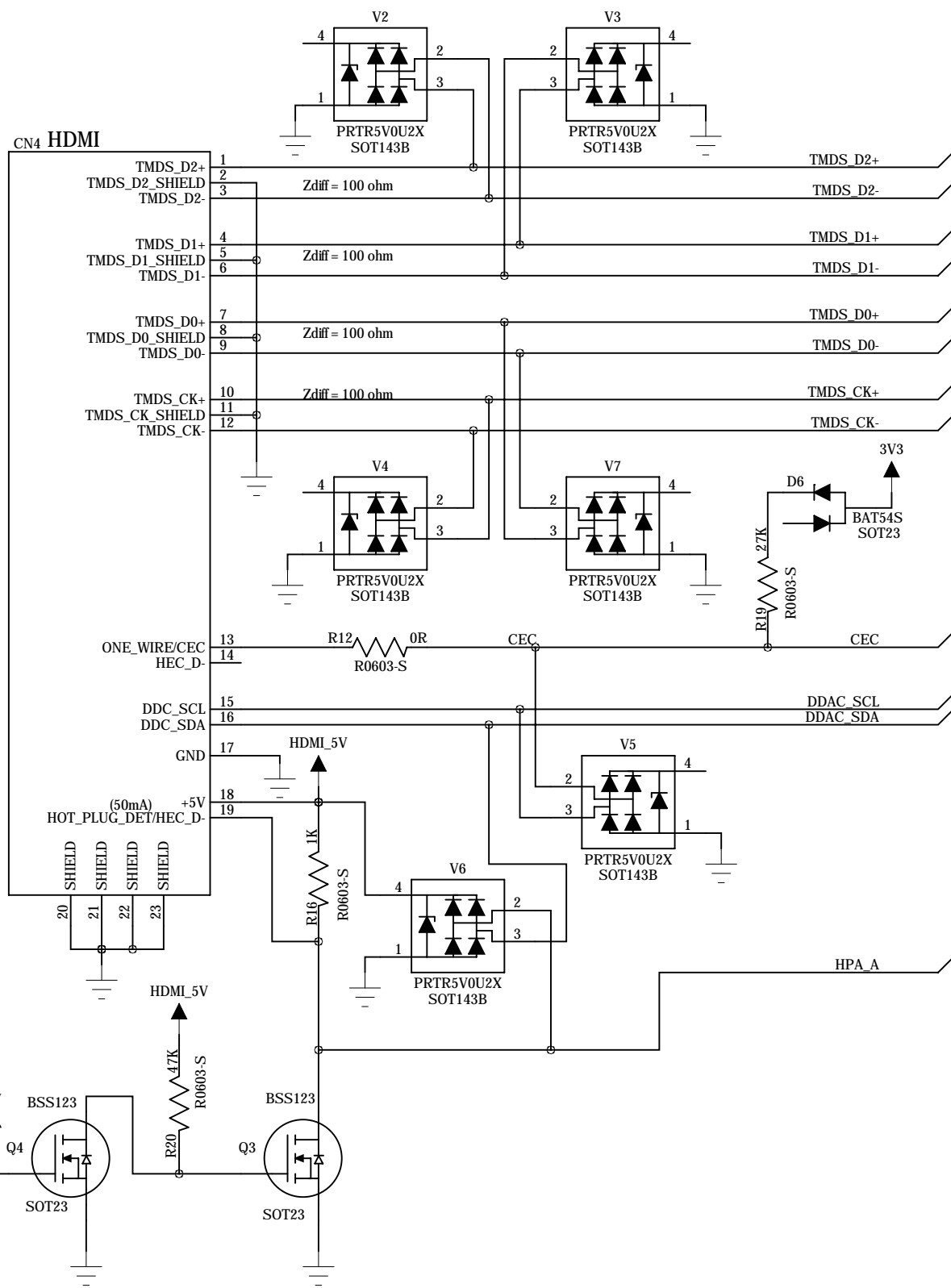
POWER 3V3
ADV7611:236mA
24LCS22A:3mA

POWER 1V8
ADV7611:331mA

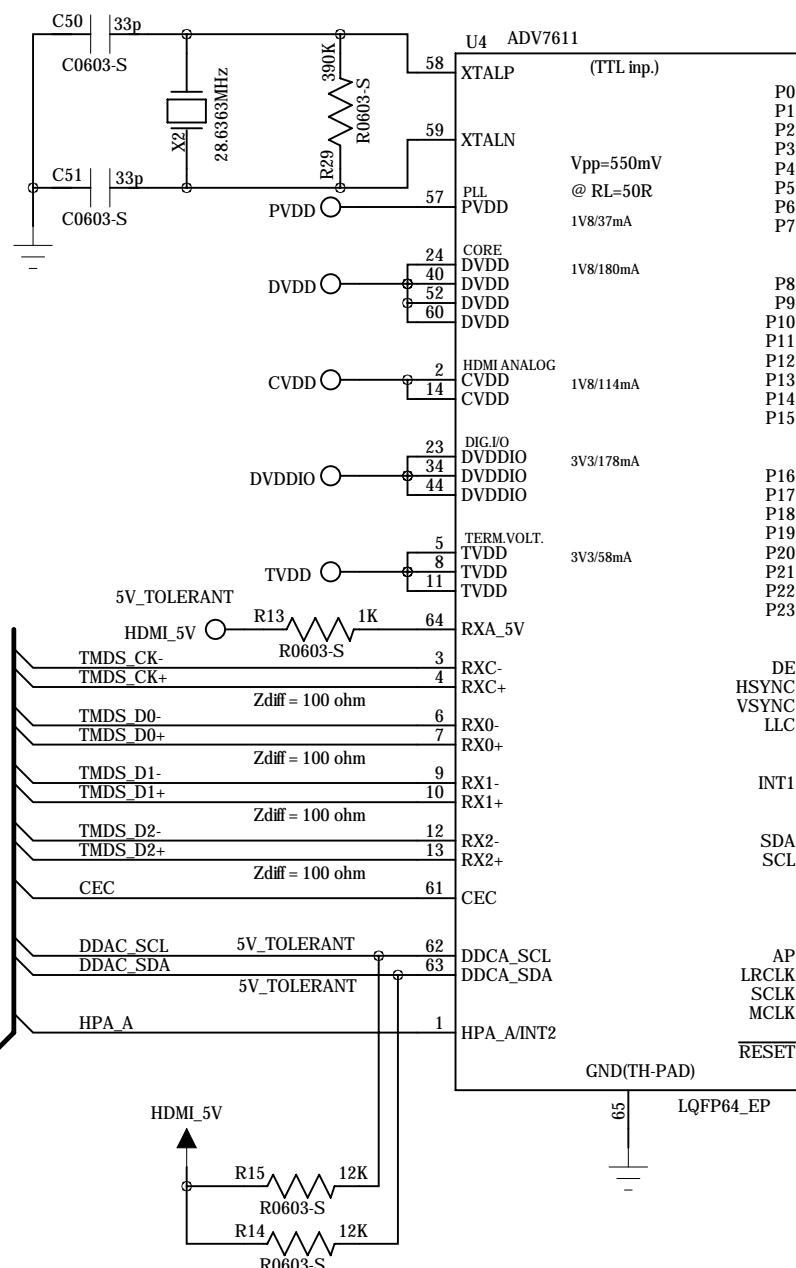
CONNECTOR TYPE
MOLEX 471510001
WE 685119134923



(placed near connector)
C_{lo} - GND = 1pF @ 1MHz
ESD = 8 kV
VBR4 - GND = 6Vmin - 9Vmax

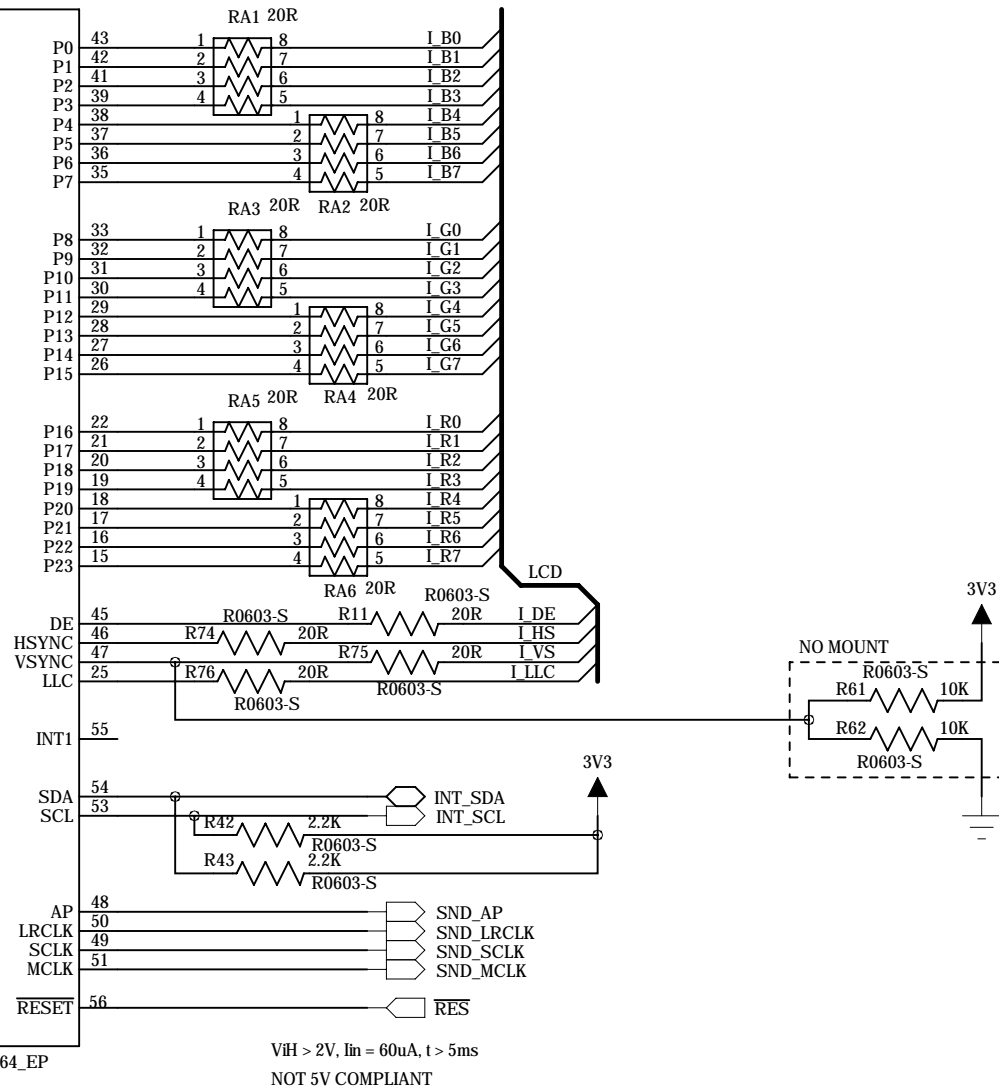


Tol < 50ppm
ESR < 80ohm
CL < 18pF
XTAL_FREQ_SEL = 01(DEFAULT)



R61 10K PULLUP MOUNTED
ADDRESS IO MAP = 0X9A

R62 10K PULLDOWN MOUNTED OR NOT
ADDRESS IO MAP = 0X98



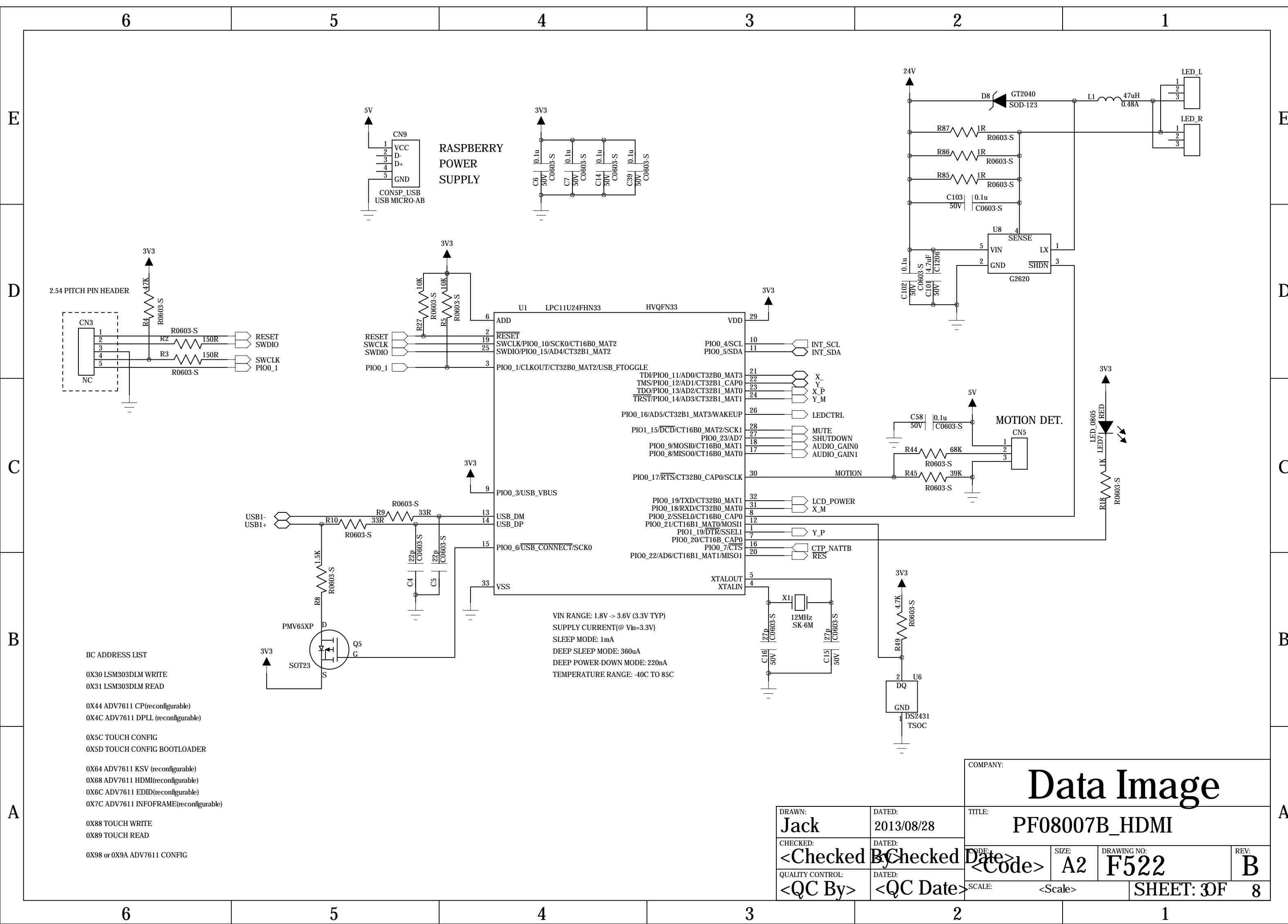
VH > 2V, Iin = 60uA, t > 5ms
NOT 5V COMPLIANT

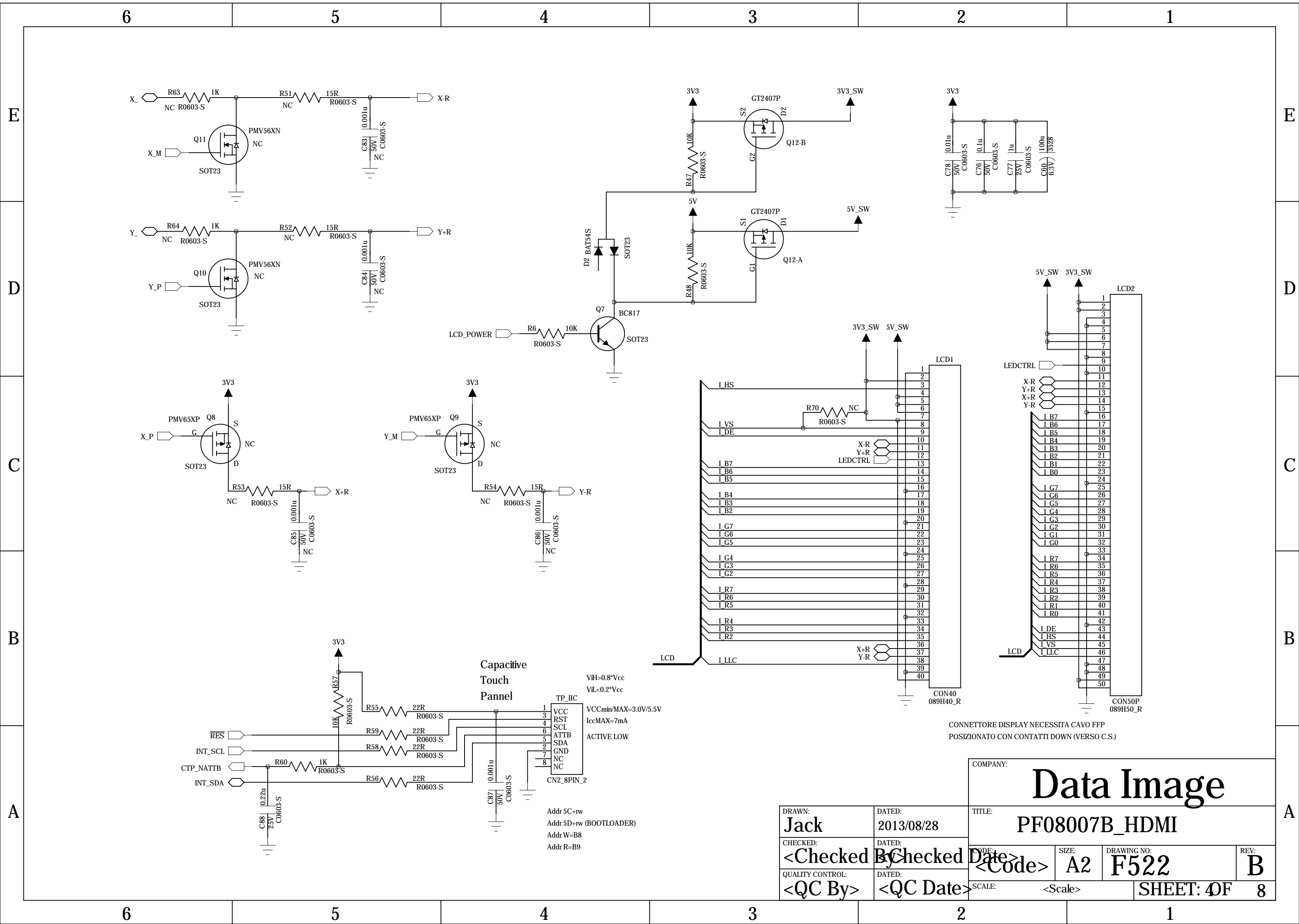
COMPANY:

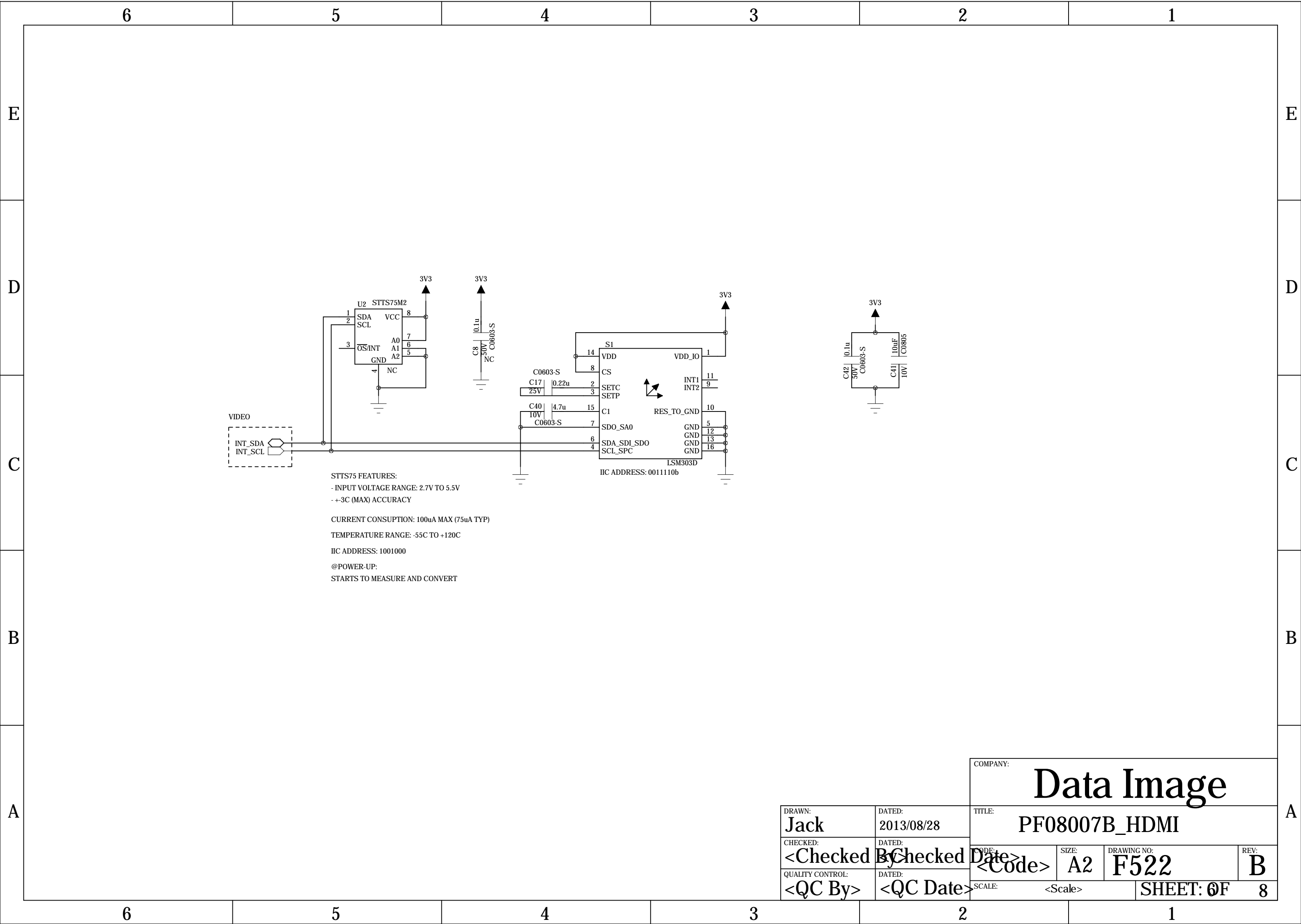
Data Image

DRAWN: Jack	DATED: 2013/08/28
CHECKED: <Checked By>	DATED: <Checked Date>
QUALITY CONTROL: <QC By>	DATED: <QC Date>

TITLE: PF08007B_HDMI			
CODE: <Code>	SIZE: A2	DRAWING NO: F522	REV: B
SCALE: <Scale>		SHEET: 20F 8	







E

D

C

B

A

History:

2013/06/07 initial date, schematic re-building, copier from VE's schematic

2013/06/19:

Add Q2, Q13, R73, R72, CN12, CN13 for LED lightbar

Add array-resistores on RA1 ~ RA7

Add a 24bit LCD option connector on LCD2.

2013/06/24:

Remane connectors reference designator from CN6, CN7, CN8, CN11, CN12 to SP_L, SP_R, LCD1, LED_L, LED_R

Change connectors type CN5, LED_L, LED_R from Molex to CVILUX's CI0103MIHR0-LF, pitch 2.0mm.

Change connectors type SP_L, SP_R from Molex to CVILUX's CI0102MIHR0-LF, pitch 2.0mm.

Change type of diode D1 from SS24 to GT2040.

Change type of diode D2 and D6 from BAT54 to GT1040.

All of passive components supplier confirmation such as R, C, L

2013/06/25:

Change accelerometer / magnetometer S1 from LSM303DLM to LSM303D

Change D2, D6, D7 from GT1040WS to BAT54S

Change R36 value from 3.9k to 3.92k

Change Q2 from PMV65XP to GT230NS, and remove Q13, R72, R73 for 24V LED lightbar

2013/07/3:

R69, R71 removed

pin2 and pin 3 of V6 swap

2013/08/12:

Change version from A to B

Change X2 package from S49 to S3225A

Removed Q2 and add U8, C101~C103, L1, D8, R85~R87 for light bar power

Change connection of pin 9, U1 from VBUS to 3.3V

Put Q8~Q11, R51~R54, R63, R64, C83~C86 BOM value on "NC"

Put U2,C8 BOM value on "NC"

Add sheet "USB_HUB" to connected barcode reader, camera, U1 USB bus altogether via U8 hub.

2013/08/28:

Change connection of connector reader pin1 from 3.3V to 5V.

DRAWN: Jack		DATED: 2013/08/28		COMPANY: Data Image	
CHECKED: <Checked By>		DATED: <QC Date>		TITLE: PF08007B_HDMI	
QUALITY CONTROL: <QC By>		DATED: <QC Date>		CODE: <Code>	SIZE: A2
				DRAWING NO: F522	REV: B
				SCALE: <Scale>	SHEET: 8 OF8